

property information

name	eastern ridge
location	302 hickman rd charlottesville, virginia 22911
type	office condo
square feet	1,900 sf
rental rate	\$343,000
potential uses	professional office / medical

property description

Picturesque office condo/building, a stones throw from the new hospital on Pantops. Situated within small 5 unit office building. 5 large offices, reception/work room, kitchenette and handicapped accessible bathroom. Private entrance and lobby/elevator entrance. 1,900 sf plus 400 sf of additional storage space. Attractive price - \$180.00/sf. Available 5/1/2010.

office condo for sale

for additional information please call:

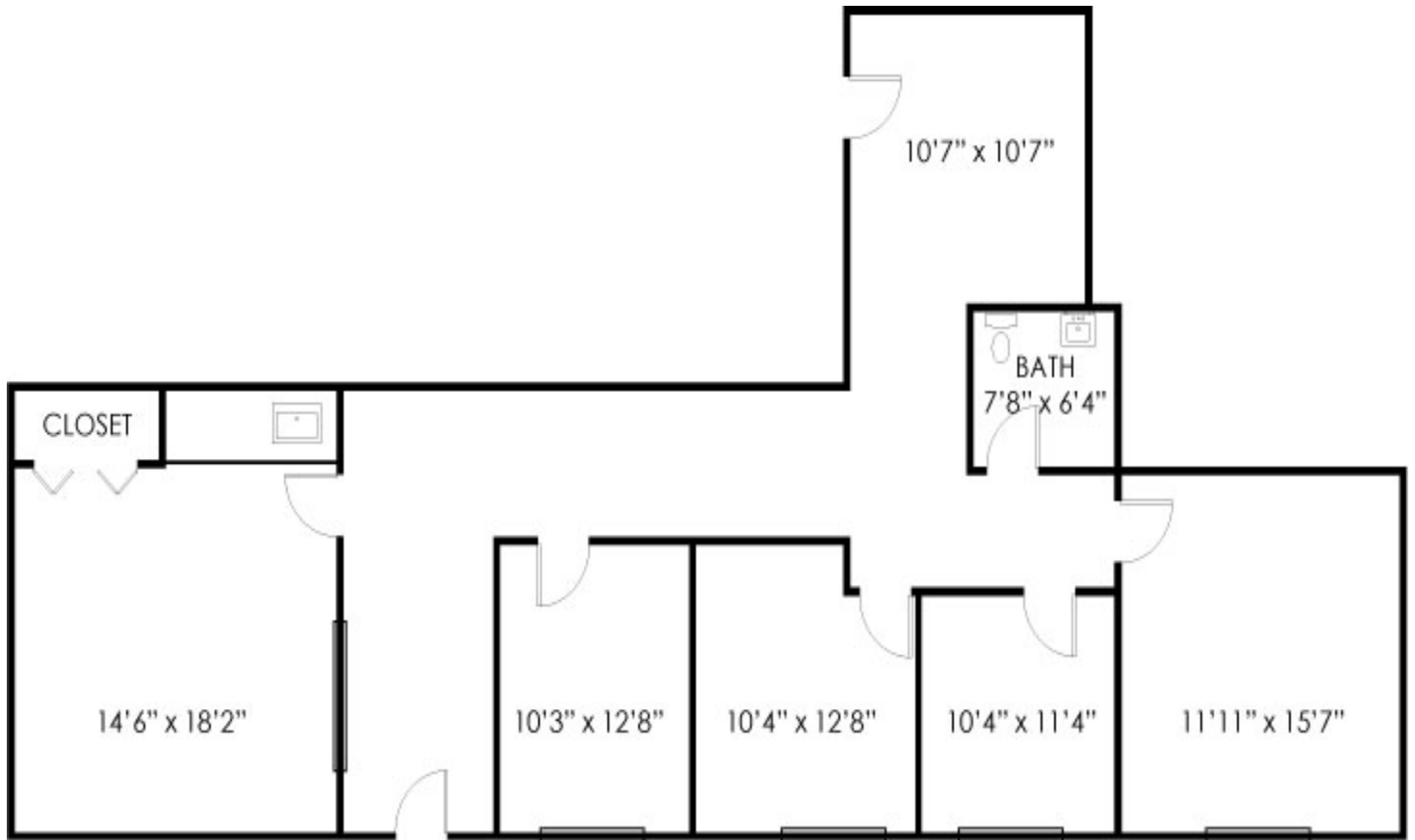
434.293.6069 ext. 102



1658 state farm blvd. suite C • charlottesville, va 22911 • rjones@msc-rent.scom • 434.293.6069

disclaimer: no warranty or representation, express or implied, is made as to the accuracy of the information contained herein, and same is submitted subject to errors, omissions, change of price, rental or other condition, withdrawal with notice, and to any special listing conditions imposed by principals.

Floor plan



Eastern Ridge:
Suite 101